

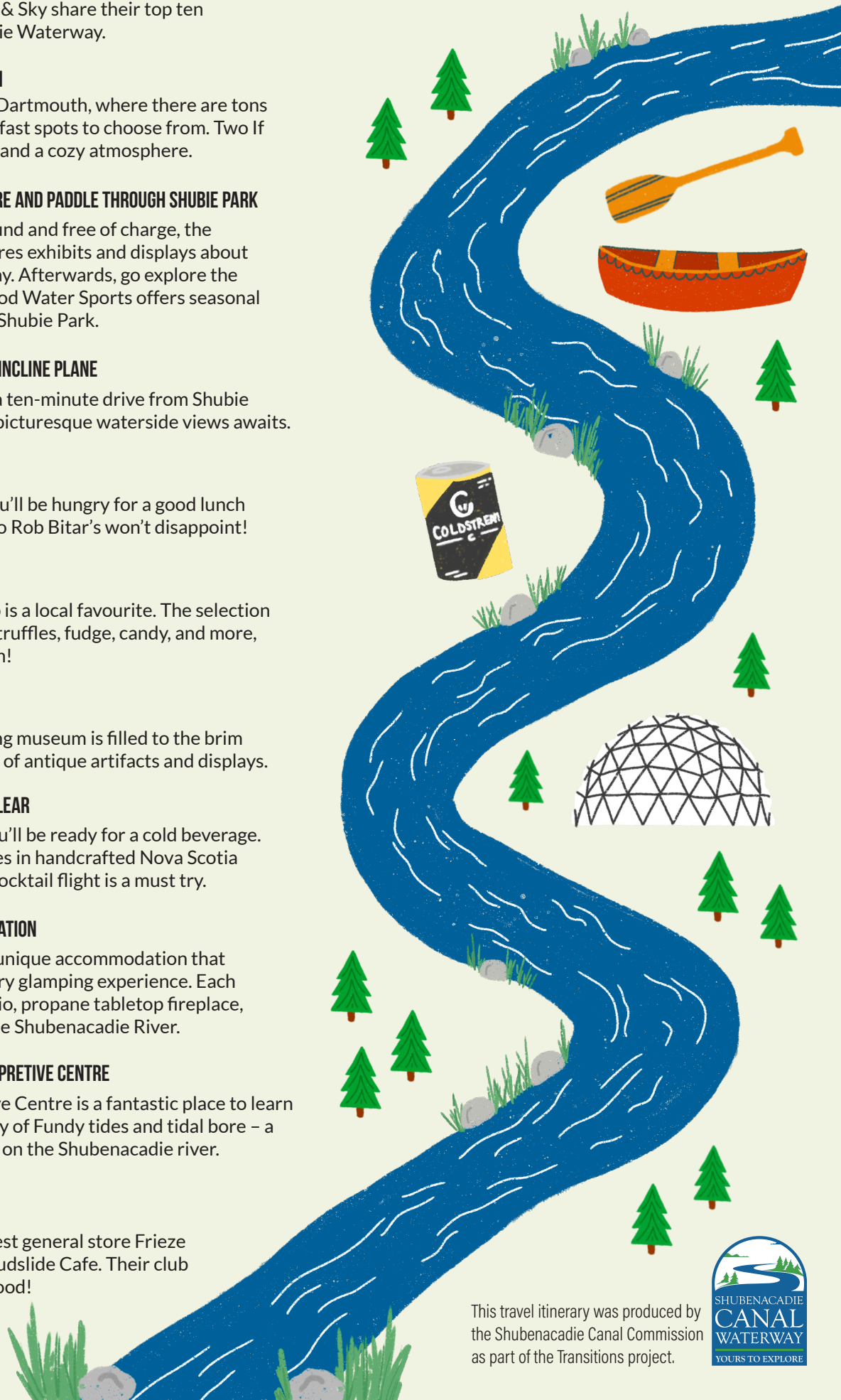
EXPLORE THE WATERWAY: TOP TEN

TRIP MAP

Nova Scotia travel vloggers Davey & Sky share their top ten things to do along the Shubenacadie Waterway.

- 1. ENJOY BREAKFAST IN DARTMOUTH**
Start the day in downtown Dartmouth, where there are tons of fantastic cafes and breakfast spots to choose from. Two If By Sea has great croissants and a cozy atmosphere.
- 2. DROP INTO THE FAIRBANKS CENTRE AND PADDLE THROUGH SHUBIE PARK**
Open to the public year-round and free of charge, the interpretation center features exhibits and displays about the Shubenacadie Waterway. Afterwards, go explore the waterway by boat! Wildwood Water Sports offers seasonal canoe and kayak rentals at Shubie Park.
- 3. HIKE (OR BIKE) THE PORTOBELLO INCLINE PLANE**
Portobello Incline Plane is a ten-minute drive from Shubie Park. A beautiful trail with picturesque waterside views awaits.
- 4. HAVE LUNCH IN ELMSDALE**
As you roll into Elmsdale you'll be hungry for a good lunch stop and treating yourself to Rob Bitar's won't disappoint!
- 5. PERUSE A LOCAL SHOP**
Sweet Spot Chocolate Shop is a local favourite. The selection of handcrafted chocolates, truffles, fudge, candy, and more, is a chocolate lovers' heaven!
- 6. VISIT THE TINSMITH MUSEUM**
Built in 1896, this fascinating museum is filled to the brim with over a century's worth of antique artifacts and displays.
- 7. GRAB A DRINK AT COLDSTREAM CLEAR**
After some adventuring, you'll be ready for a cold beverage. Coldstream Clear specializes in handcrafted Nova Scotia spirits and their signature cocktail flight is a must try.
- 8. STAY AT A RIVERSIDE ACCOMMODATION**
Gravity Luxury Domes is a unique accommodation that provides guests with a luxury glamping experience. Each dome has its own stone patio, propane tabletop fireplace, and an incredible view of the Shubenacadie River.
- 9. EXPLORE THE FUNDY TIDAL INTERPRETIVE CENTRE**
The Fundy Tidal Interpretive Centre is a fantastic place to learn about the world-famous Bay of Fundy tides and tidal bore – a natural wonder that occurs on the Shubenacadie river.
- 10. HAVE LUNCH IN MAITLAND**
Grab lunch at Canada's oldest general store Frieze and Roy and its in-house Mudslide Cafe. Their club sandwich and fries are so good!

Text and photos by Davey and Sky Media.



This travel itinerary was produced by the Shubenacadie Canal Commission as part of the Transitions project.

